



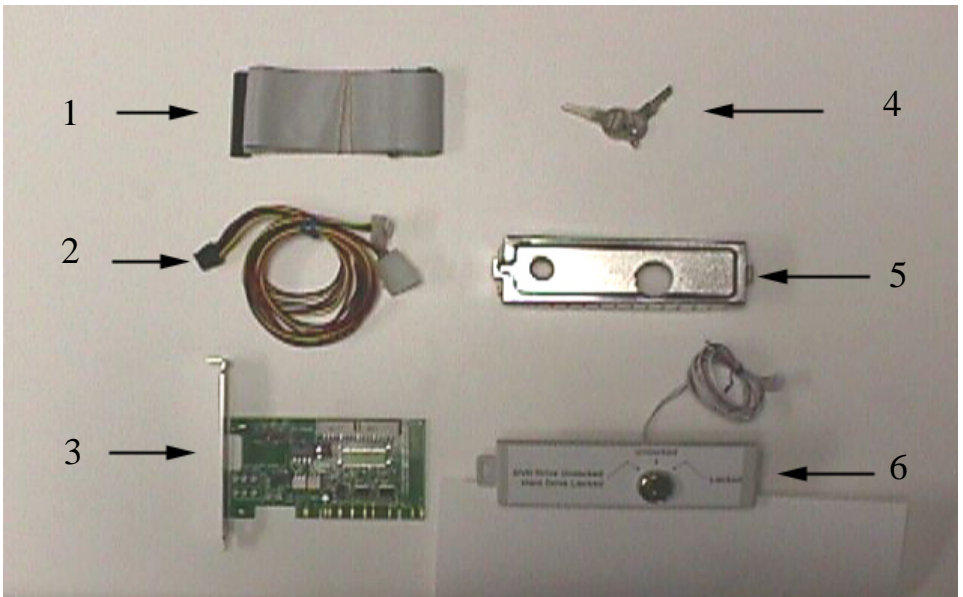
PCI Installation Guide



PACKAGE COMPONENTS

Below is a list of each component included in the package.

1. Floppy Cable
2. Power Cable
3. PCI Board
4. Keys
5. Metal Plate
6. Plastic Face Plate
7. Installation Diskette (Not Shown)



HARDWARE INSTALLATION

Step 1. Insert the plastic key plate into the front panel of the computer case.
(Figure 1)



Figure 1

Step 2. Insert the metal plate. Locate the keylock hole in the metal plate.
(Figure 2)

Step 3. Feed the keylock cable through the keylock hole. Snap the front cover into place. (Figure 3)

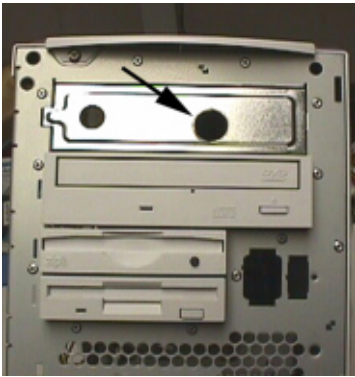


Figure 2



Figure 3

HARDWARE INSTALLATION CONTINUED

Step 4. Attach the power cable to the power connector on the PCI board.
(Figure 4)

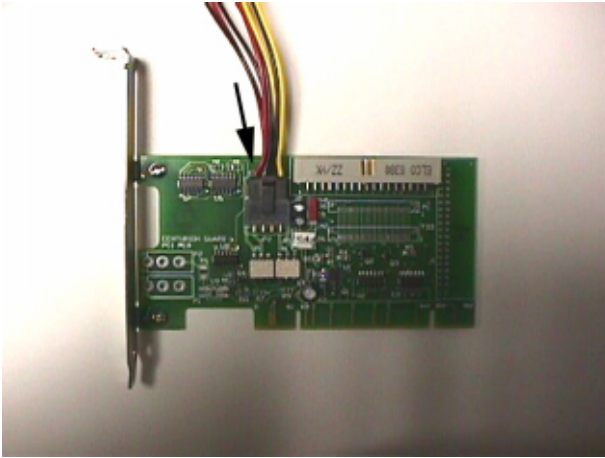


Figure 4

Step 5. Attach the keylock cable to the PCI board as shown in Figure 5.

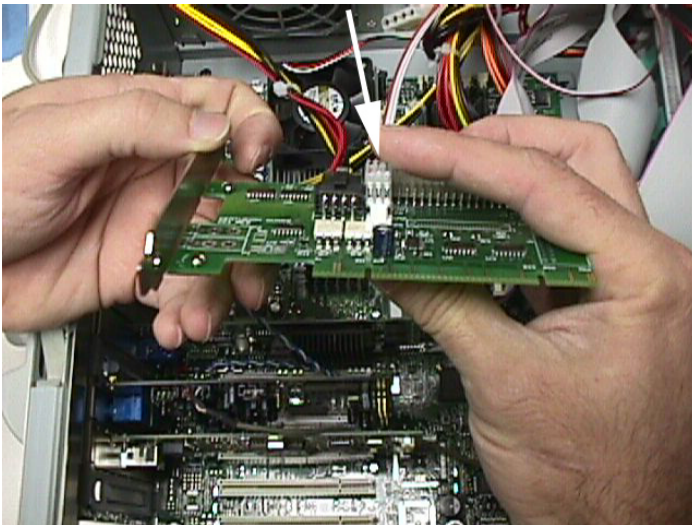


Figure 5

HARDWARE INSTALLATION CONTINUED

Step 6. Locate an open PCI expansion slot as shown in Figure 6.

Step 7. Insert the PCI board into the open PCI slot

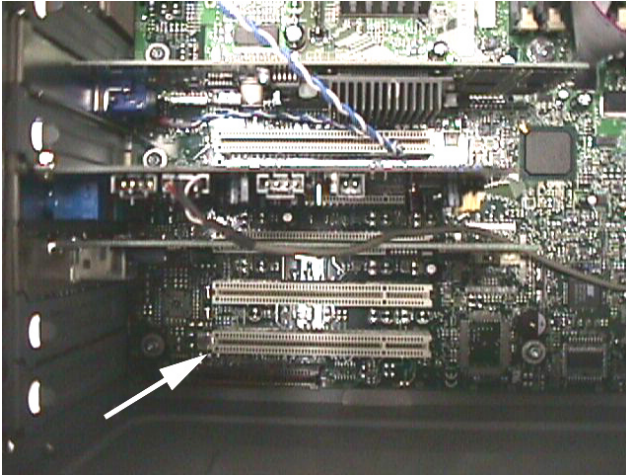


Figure 6

Step 8. Attach the floppy cable to the PCI board so that pin 1 (usually red) is toward the back of the case as shown in Figure 8.

Note: Attach the floppy cable so that the center floppy connector is attached to the motherboard. The connector at the “long” end of the cable is attached to the Centurion Guard PCI board, and the other end connector is attached to the floppy disk drive. See Figure 8.5 on the following page.

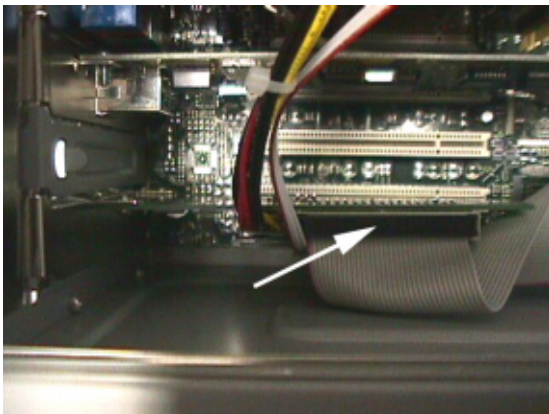
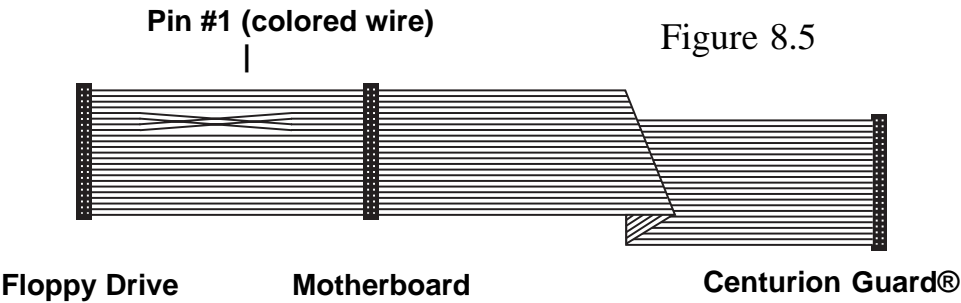


Figure 8

HARDWARE INSTALLATION CONTINUED



Step 9. Connect the power cables to the power supply and the DVD Drive as shown in Figures 9, 10, and 11.

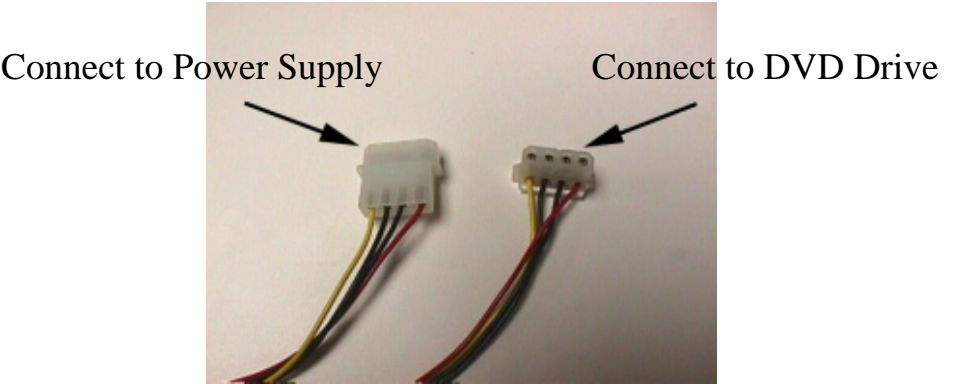


Figure 9

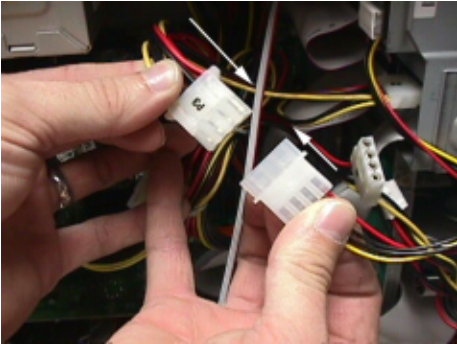


Figure 10



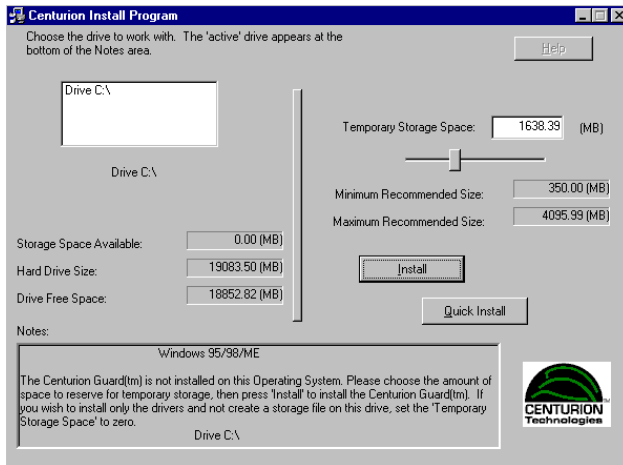
Figure 11

SOFTWARE INSTALLATION

Begin the Centurion Guard® software installation by setting the computer configuration to the default conditions you wish to use. This includes installing any software applications that will be used on the system.

Continue by following the steps below:

1. Insert the installation disk into the 3.5” disk drive and open My Computer.
2. Open the drive that contains the installation disk and double-click the Install icon.
3. Either select the default storage space or select a different size by dragging the slider bar or typing in the text box.
4. After you have selected the desired storage space click the **Install** button.

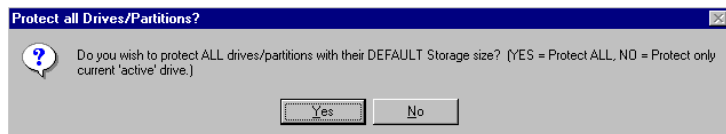


Note: Selecting the **Quick Install** button will skip step 5 and create a storage file on every drive protecting all drives.

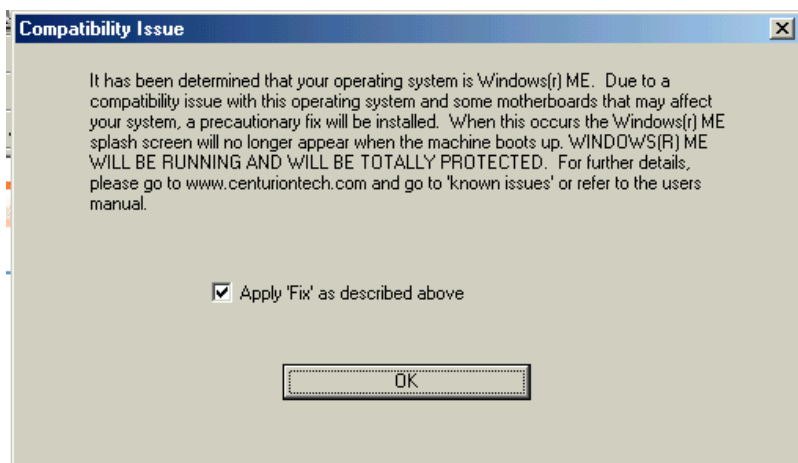
SOFTWARE INSTALLATION CONTINUED

5. You will be asked to choose to either protect “All” drives or the current “Active” drive. Choosing **Yes** will create a storage area on each drive indicated in the “Drive Window.” Selecting **No** will create a storage area on only the Active drive appearing in the notes area at the bottom of the window.

Note: The Temporary Storage Area creation process may take several minutes.



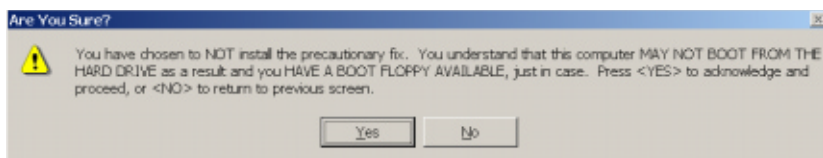
6. If Windows® ME is detected, you will be presented with a window like the one below. Otherwise, skip to step 8. Due to a compatibility issue between this OS and some motherboards that may affect your system, a precautionary fix will be installed. When this occurs, the Windows® ME splash screen will no longer appear when the machine boots up. However, Windows® ME will be running and will be totally protected.



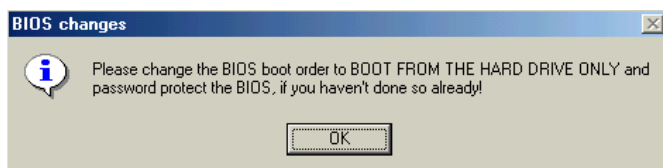
SOFTWARE INSTALLATION CONTINUED

- To apply the fix, select **OK**. To continue without applying the fix, remove the check mark before selecting **OK** and confirm that you would like to proceed without applying the fix by again selecting **OK** on the dialog box below.

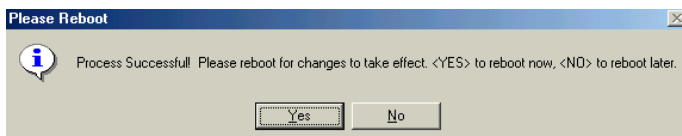
Note: Choosing not to apply the fix may result in a system that will not boot.



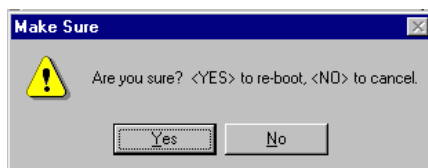
- Please remember to change the boot sequence in the BIOS to boot from the hard drive as the first boot device. Select **OK** to continue.



- The process is now complete. It is necessary to reboot for the changes to take effect. Select **Yes** to reboot now or **No** to reboot later.



- Select **Yes** to confirm the reboot or **No** to cancel.



All rights reserved. No part of this publication may be reproduced, stored in a retrieval system, or transmitted in any form or by any means, electronic, mechanical, photocopying, recording, or otherwise, without the prior written permission of Centurion Technologies, Inc.[™] Centurion Technologies, Inc.[™] shall not be liable to the purchaser of this product or third parties for damages, losses, costs, or expenses incurred by purchaser or third parties as a result of: accident, misuse, or abuse of this product or unauthorized modifications, repairs, or alterations to this product.

General Notice: Other product names used herein are for identification purposes only and may be trademarks of their respective owners. Centurion Technologies, Inc.[™] disclaims any and all rights in those marks.



Centurion Technologies, Inc.
512 Rudder Road
Fenton, MO 63126
800.224.7977 Sales
888.265.6055 Technical Support